

PAPER AND PULP PLANT DEMOLITION

Former GPI Paper Plant 79 E. Fountain Street Battle Creek, MI

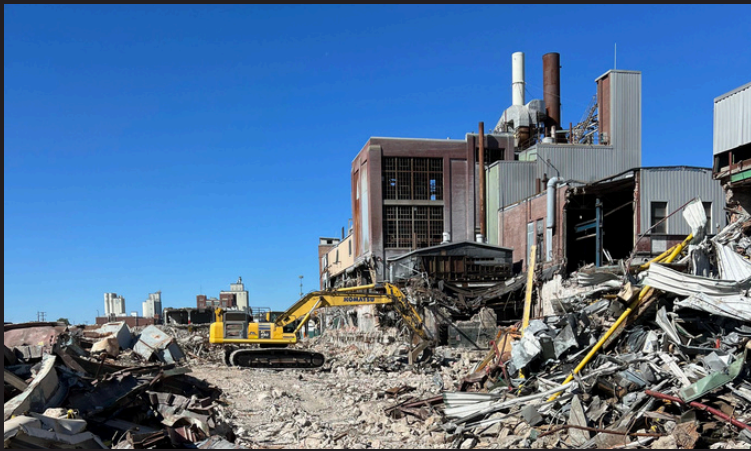
MELCHING, INC.

Client: Graphics Packaging International
melchingdemolition.com

Project Overview

Melching completed 100 percent demolition and site clearance of the former Graphics Packaging International paper mill in Battle Creek. The 300,000 sq. ft. multi-level facility included a large boiler house and extensive industrial infrastructure.

The project required full environmental abatement, controlled demolition, material separation, and final site restoration.



Approach

- Asbestos abatement and universal waste removal
- Full demolition of all structures
- On-site concrete crushing
- Separation of steel and concrete
- Final grading, topsoil, and seeding

Critical Safety & Site Constraints

- Active Amtrak rail line adjacent to demolition
- Tall structure removal next to live tracks
- Controlled sequencing and constant monitoring
- Completed with safe execution and uninterrupted rail operations

Equipment & Resources

- Heavy excavators
- Concrete crushing equipment
- Material separation systems
- In-house demolition crews

Schedule & Results

- 12-month duration
- Site delivered cleared, graded, and seeded
- Successful coordination with railroad stakeholders

As a Compass-certified contractor, Melching met stringent safety and compliance standards on this remediation and demolition project.

**MELCHING
MAKES WAY
FOR BIG
PLANS**

